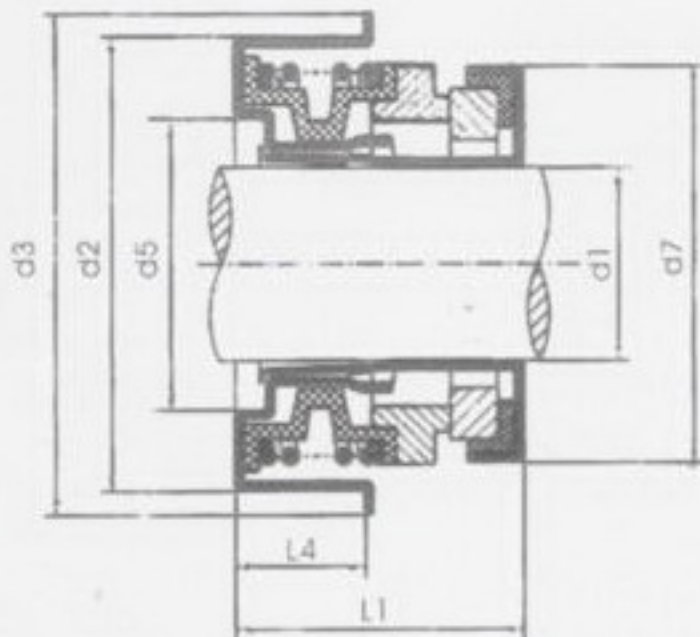


TYPE 7L



Specification

Used pressure: Below 5kg/cm² (vacuum degree reached to 750mmHg)

Revolution speed: Below 10,000R.P.M.

Temperature: -120°C to 120°C

Fluids: Aqueous solution of antirust or anticler cleaned water, warm water lubricant, turbid water.

Usage

*Cooling pump of automobile engine.

*High speed pump household worked by engine.

*Pump for general use.

*Small-typed centrifugal pump

Unit:m/m

Size	d 1	d 2	d 3	d 5	d 7	L 1	L 4
7L-12S	12	28.55	32.0	18.5	25.0	17.5	8.0
7L-12M	12	30.00	35.0	18.5	25.0	17.5	8.0
7L-12L	12	33.40	38.0	18.5	25.0	17.5	6.7
7L-13	13	30.00	35.0	18.5	25.0	18.0	8.0
7L-15	15	36.45	41.5	22.5	30.5	20.5	8.0
7L-16	16	36.45	41.5	22.5	30.5	20.5	8.0
7L-16S	16	36.45	41.5	22.5	28.0	20.0	8.5
7L-16M	16	36.45	41.5	19.3	31.5	20.5	9.0
7L-16L	16	38.10	43.5	22.5	30.5	20.5	8.0
7L-16LD	16	38.10	43.5	22.5	28.5	20.5	8.0
7L-20	20	38.00	43.8	26.5	37.0	22.0	9.5
7L-20S	20	40.00	43.8	28.0	37.0	22.0	9.5