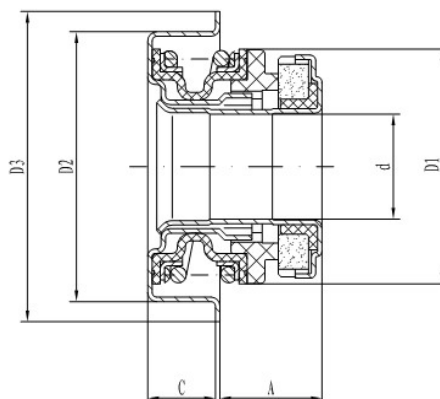


TYPE 7CF/7CJ/7C



Specification

Temperature : - 35°C ~ 135°C

Pressure : ≤0.3MPa

Speed : φ12≤7200r/min ; φ16≤6500r/min ;
φ20≤5000r/min

MATERIAL

Parts & Spring : Stainless Steel

Rubber parts : NBR & HNBR

Stationary Ring : Carbon/Silicon Carbide

Rotary Ring : Silicon Carbide

Model	d	A	C	D1	D2	D3
7CF-0	12	8.9	7.6	26.5	30	35
7CF-3	12	8	8.5	26.5	30	35
7CF-4	12	9.2	7.3	26.5	30	35
7CF-5	12	9.6	7.6	26.5	30	35
7CF-6	12	8.8	7.7	26.5	38.1	43.6
7CF-7	12	9.3	8	26.5	39.5	43.6
7CF-8	12	9.3	8	26.5	30	35
7CF-9	12	7.7	8.5	26.5	30	35
7CF-10	12	7.1	8.5	26.5	30	35
7CJ-1	15.918	10.9	8	31.5	36.5	41
7CJ-2	15.918	11.84	7.1	31.5	34.2	39.5
7CJ-5	15.918	10.4	8	31.5	36.5	41
7CJ-6	15.918	10.9	8	31.5	38.1	43.6
7CJ-7	15.918	10.8	8	31.5	36.4	41
7CJ-8	15.918	10.8	8	31.5	38.1	43.6
7CJ-9	16	10.9	8	31.5	36.5	41
7CJ-10F	15.918	12.3	7	31.5	34.2	39.5
7C-1-b	20	11.9	10.6	36.5	38.1	43.6
7C-2-c	20	12	10.6	36.5	52	58
7C-3	20	12.5	10	36.5	40	46
7C-4G	20	14.4	8	36.5	38.1	43.6