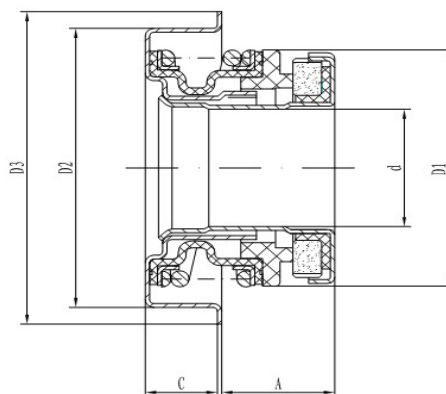


TYPE 7CD/7CR



Specification

Temperature : $-35^{\circ}\text{C} \sim 135^{\circ}\text{C}$

Pressure : $\leq 0.3\text{MPa}$

Speed : $\phi 12 \leq 7200\text{r/min}$; $\phi 16 \leq 6500\text{r/min}$;
 $\phi 17 \leq 5800\text{r/min}$

MATERIAL

Parts & Spring : Stainless Steel

Rubber parts : NBR & HNBR

Stationary Ring : Carbon/Silicon Carbide

Rotary Ring : Silicon Carbide

Model	d	A	C	D1	D2	D3
C12D	12	0.4+8.9	7.6	26.5	30	35
C16R-0	15.918	0.4+11.84	7.1	31.5	34.2	39.5
C16R-1	15.918	0.4+10.7	8.2	31.5	36.5	41
C16R-2	16	0.4+10.7	8.2	31.5	38.1	43.6
C17R-0	17	0.4+13.6	8	33.5	35	41