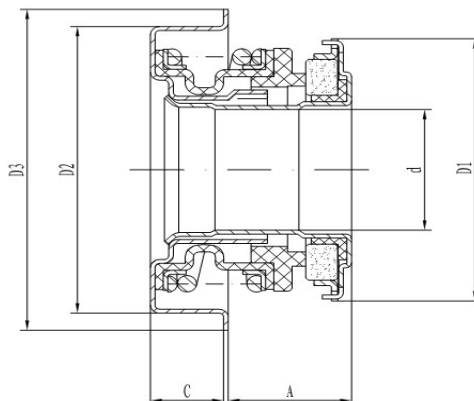


TYPE 7CA/7CH



Specification

Temperature : - 35°C ~ 135°C

Pressure : ≤ 0.3 MPa

Speed : $\phi 12 \leq 6500$ r/min ; $\phi 16 \leq 6000$ r/min ;

MATERIAL

Parts & Spring : Stainless Steel

Rubber parts : NBR & HNBR

Stationary Ring : Carbon/Silicon Carbide

Rotary Ring : Ceramic/Silicon Carbide

Model	d	A	C	D1	D2	D3
7CA-0	12.7	7.6	9.8	25	39.5	43.6
7CA-2	12	9.3	8	25	30	35
7CA-7	12	9.3	8	25	38.1	43.6
7CA-11	12	9.3	7.6	25	30	35
7CA-13	12	8.8	6.7	25	30	35
7CH-0	15.918	10.9	8	33	35	41
7CH-1	15.918	10.9	8	33	36.5	41