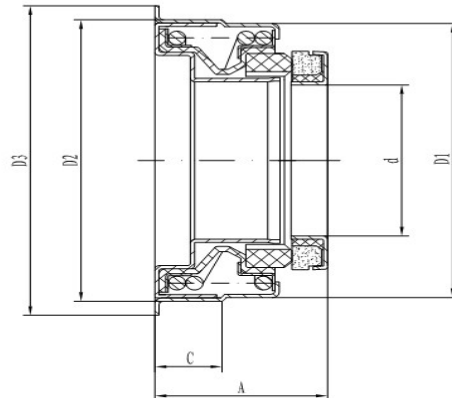


# TYPE 7B4



## Specification

Temperature : - 35°C ~ 135°C

Pressure :  $\leq 0.3$ MPa

Speed :  $\leq 3000$ r/min

## MATERIAL

Parts & Spring : Stainless Steel

Rubber parts : HNBR

Stationary Ring : Carbon

Rotary Ring : Silicon Carbide

Model	d	A	C	D1	D2	D3
B42	42	29.5+7.9	14	75.6	76.3	85