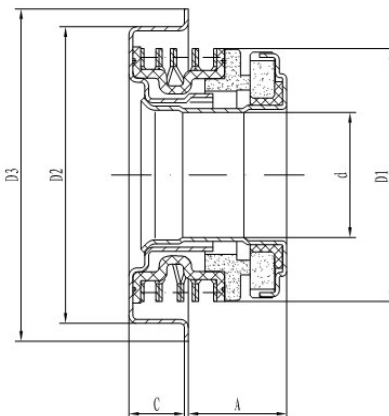
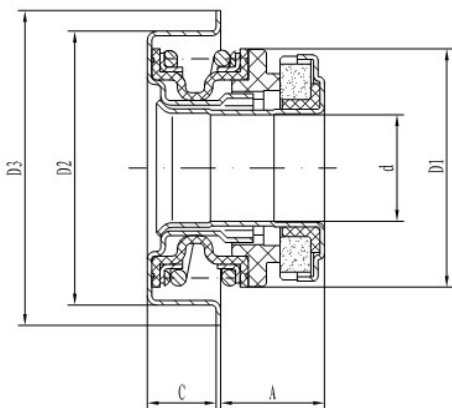


Double SIC Series



Specification

Temperature : - 35°C ~ 135°C

Pressure : ≤0.3MPa

Speed : φ12≤7200r/min ; φ16≤6500r/min ;

φ17≤5800r/min ; φ19≤5500r/min

φ20≤5000r/min

MATERIAL

Parts & Spring : Stainless Steel

Rubber parts : HNBR

Stationary Ring : Silicon Carbide

Rotary Ring : Silicon Carbide

Model	d	A	C	D1	D2	D3	Remark
7CCS-0	12	7.1	5.5	26	30	35	wave spring
7CJW-0	15.918	10.1	7	31.5	34.2	39.5	wave spring
7CJW-1	15.918	10.1	7	31.5	36.5	41	wave spring
7CS-0	15.918	12.2	7	31.5	34.2	39.5	
7CS-1	15.918	10.8	8	31.5	36.5	41	
7CS-0	17	13.5	8	33.5	35	41	
7CS-0	19	14	9	36.5	38	46	
7CS-0	20	12.5	10	36.5	40	46	